

# FITTING INSTRUCTIONS

TO BE FITTED BY A QUALIFIED TECHNICIAN

Threaded Brake Lever Guard **Part No. BLG-M5-S20-B5-A160-GBR**

Threaded Clutch Lever Guard **Part No. CLG-M5-S20-B5-A160-GBR**

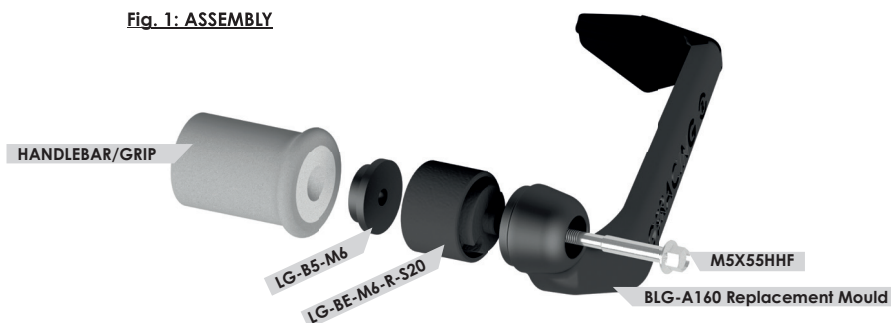
## M5 THREADED BRAKE LEVER GUARD, 20mm SPACER BAR END WITH 5MM BUSH, 160mm PART NO. BLG-M5-S20-B5-A160-GBR

- 1 Remove existing bar end and replace with supplied assembly as in Fig 1 below
- 2 Tighten bolt until the lever protector is tight and does not move up or down under normal pressure. Torque the M5 bolt to 12Nm.
- 3 Do not ride if you are unsure if it is tight enough and always get a trained technician to confirm.

Please note: We recommend to use a medium thread lock (not supplied) for correct operation.



**Fig. 1: ASSEMBLY**

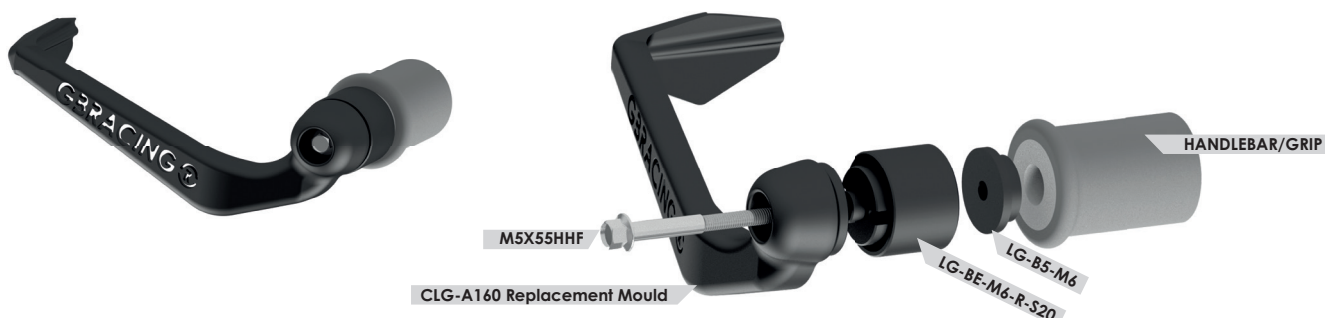


## M5 THREADED CLUTCH LEVER GUARD, 20mm SPACER BAR END WITH 5MM BUSH, 160mm PART NO. CLG-M5-S20-B5-A160-GBR

- 1 Remove existing bar end and replace with supplied assembly as in Fig 1 below
- 2 Tighten bolt until the lever protector is tight and does not move up or down under normal pressure. Torque the M5 bolt to 12Nm.
- 3 Do not ride if you are unsure if it is tight enough and always get a trained technician to confirm.

Please note: We recommend to use a medium thread lock (not supplied) for correct operation.

**Fig. 1: ASSEMBLY**



# FITTING INSTRUCTIONS

TO BE FITTED BY A QUALIFIED TECHNICIAN

## UNIVERSAL BRAKE LEVER GUARD, **A160** MOULDED REPLACEMENT PART ONLY **PART NO. BLG-A160**

**This is to be used with the GBRacing bar end and insert**

- 1 Remove full assembly from bars.
- 2 Remove bolt from assembly.
- 3 Replace lever protector.
- 4 Re-install bolt.
- 5 Re-fit the full assembly back into bar.
- 6 Tighten bolt until the lever protector is tight and does not move up or down under normal pressure.
- 7 Do not ride if you are unsure if it is tight enough and always get a trained technician to confirm.

*Please note: We recommend to use a medium thread lock (not supplied) for correct operation.*



## UNIVERSAL CLUTCH LEVER GUARD, **A160** MOULDED REPLACEMENT PART ONLY **PART NO. CLG-A160**

**This is to be used with the GBRacing bar end and insert**

- 1 Remove full assembly from bars.
- 2 Remove bolt from assembly.
- 3 Replace lever protector.
- 4 Re-install bolt.
- 5 Re-fit the full assembly back into bar.
- 6 Tighten bolt until the lever protector is tight and does not move up or down under normal pressure.
- 7 Do not ride if you are unsure if it is tight enough and always get a trained technician to confirm.

*Please note: We recommend to use a medium thread lock (not supplied) for correct operation.*

