



SuperSport 950 2021-2024

FITTING INSTRUCTIONS

TO BE FITTED BY A QUALIFIED TECHNICIAN



THIS SHEET INCLUDES FITTING INSTRUCTIONS FOR THE FOLLOWING PARTS:

Secondary Alternator Cover Part No. EC-937-2016-1-GBR / Secondary Clutch Cover Part No. EC-950SS-2021-2-GBR /

Secondary Water Pump Cover Part No. EC-937-2016-5-GBR

SECONDARY ALTERNATOR COVER – PART NO. EC-937-2016-1-GBR

Please note - See **Fig.2:** Before fitment, please make sure you have a marker pen to mark spline for alignment. The bracket in Fig. 2 must not be removed to fit GBRacing covers.

- 1 Remove fairing.
- 2 Remove bolt 1 on the gear linkage arm (**Fig. 2**).
Before you remove the upper bolt 2, put a mark on the spline at the bottom of the slot (as shown). Then remove the upper bolt 2 and slide off the gear linkage arm.
- 3 Remove 4 existing bolts from the stock alternator cover, shown in **Fig. 1** as position Bolt 1, 2, 3 & 4.
- 4 Place the secondary alternator cover over the stock cover.
- 5 Assemble 4 replacement bolts loosely in the correct position as shown in **Fig. 1**.
- 6 Tighten bolts to a Torque of 10Nm as per Manufacturer's recommendations.
DO NOT OVERTIGHTEN.
- 7 Put the gear linkage arm back on the spline, ensuring the slot lines up with the mark you made earlier (**Fig. 2**).
- 8 Re-fit the push rod through the bottom of the arm as in **Fig. 2** then reinstall bolt 1.
- 9 Re-fit Fairing.

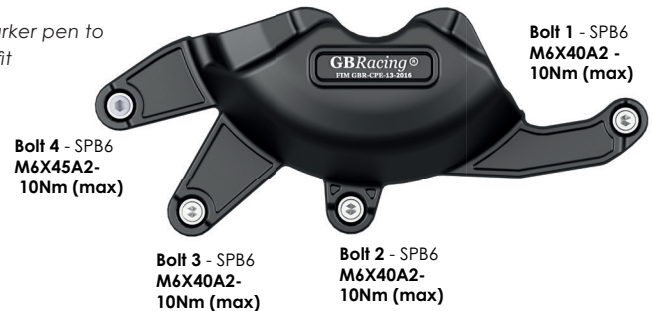


Fig. 2: GEAR LINKAGE ARM

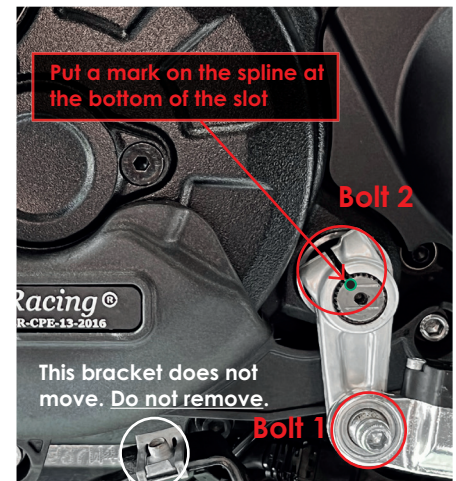
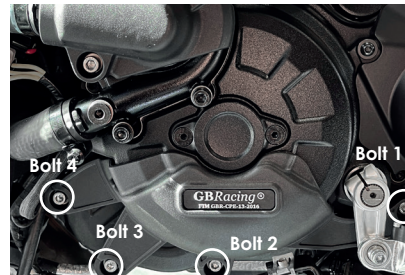


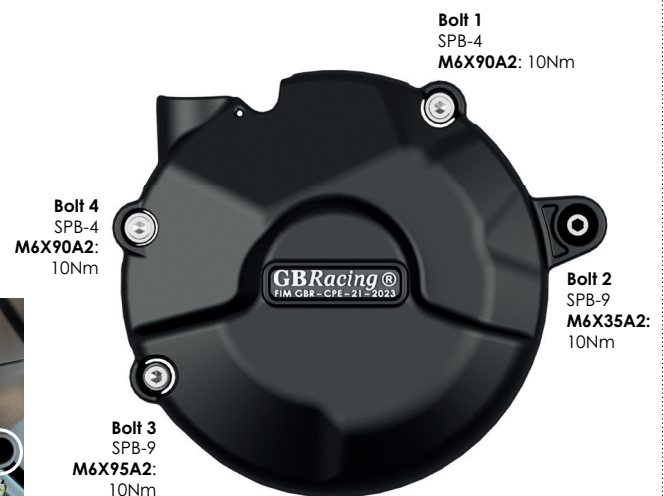
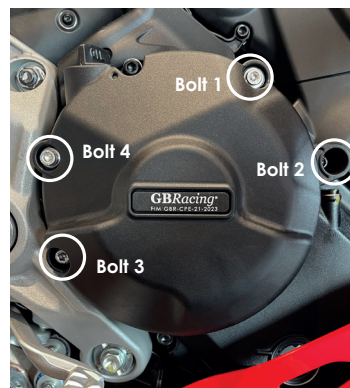
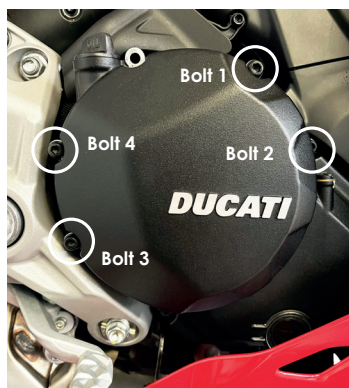
Fig. 1



SECONDARY CLUTCH COVER PART NO. EC-950SS-2021-2-GBR

Also fits: Hypermotard 950, 950 SP, 950 RVE 2019-2023

- 1 Remove the 4 standard bolts as shown as bolt position 1, 2, 3 & 4.
- 2 Place the secondary clutch over the standard clutch.
- 3 Insert the 4 supplied bolts and tighten to a maximum of 10Nm as per manufacturer's recommendations.
DO NOT OVERTIGHTEN





SuperSport 950 2021-2024

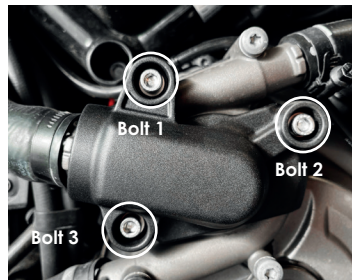
FITTING INSTRUCTIONS

TO BE FITTED BY A QUALIFIED TECHNICIAN



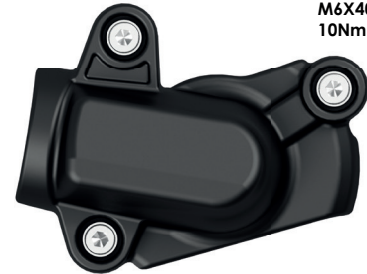
SECONDARY WATER PUMP COVER – PART NO. EC-937-2016-5-GBR

- 1 Remove fairing.
- 2 Remove 3 existing bolts from the water pump cover, shown as position Bolt 1, 2 & 3.
- 3 Place the secondary water pump cover over the stock cover.
- 4 Assemble 3 replacement bolts loosely in the correct position as shown.
- 5 Tighten bolts to a Torque of 10Nm as per Manufacturer's recommendations.
DO NOT OVERTIGHTEN.
- 6 Re-fit fairing.



**Bolt 1-SPB2
M6X40A2-
10Nm (max)**

**Bolt 2-SPB2
M6X40A2-
10Nm (max)**



**Bolt 3 -SPB2
M6X40A2
- 10Nm (max)**

ENGINE COVER SET: Part No. EC-950SS-2021-SET-GBR:

EC-937-2016-1-GBR, EC-950SS-2021-2-GBR, EC-937-2016-5-GBR,