

THIS SHEET INCLUDES FITTING INSTRUCTIONS FOR THE FOLLOWING PARTS:

Secondary Alternator Cover Part No. EC-Z900-2017-1-GBR / Secondary Clutch Cover Part No. EC-Z900-2017-2-GBR

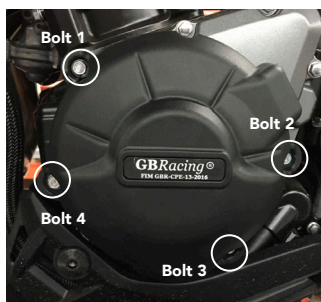
Secondary Pulse Cover Part No. EC-Z900-2017-3-GBR / Bobbin Set Part No. BA12-8-GBR-SET

Bullet Frame Sliders STREET Part Nos. FS-Z900-2017-LHS-S / FS-Z900-2017-RHS-S

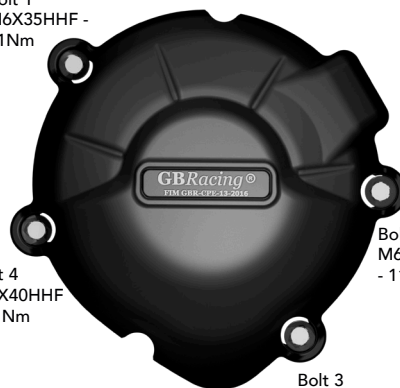


SECONDARY ALTERNATOR COVER PART NO. EC-Z900-2017-1-GBR

1. Remove 4 existing bolts from the stock Alternator cover, shown as position Bolt 1, 2, 3 & 4.
2. Place the Secondary Alternator Cover over the stock cover. *Please Note: Do not remove fairing bracket as GBRacing Secondary Cover will fit over it.*
3. Assemble 4 replacement bolts loosely in the correct positions as shown.
4. Tighten bolts to a Torque of 11Nm as per Manufacturer's recommendations.
DO NOT OVERTIGHTEN.



Bolt 1
M6X35HHF -
11Nm



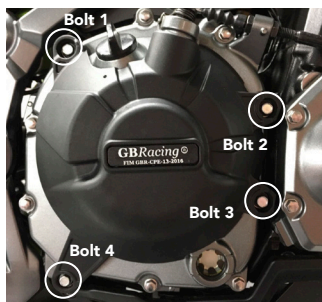
Bolt 4
M6X40HHF
- 11Nm

Bolt 2
M6X35HHF
- 11Nm

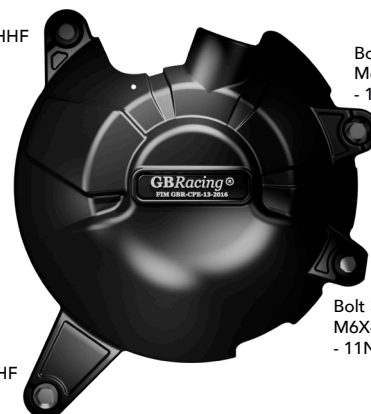
Bolt 3
M6X35HHF - 11Nm

SECONDARY CLUTCH COVER PART NO. EC-Z900-2017-2-GBR

1. Remove 4 existing bolts from the Clutch cover, shown as position Bolt 1, 2, 3 & 4.
2. Place the Secondary Clutch Cover over the stock cover.
3. Assemble 4 replacement bolts loosely in the correct position as shown.
4. Tighten bolts to a Torque of 11Nm as per Manufacturer's recommendations.
DO NOT OVERTIGHTEN.



Bolt 1
M6X40HHF
- 11Nm



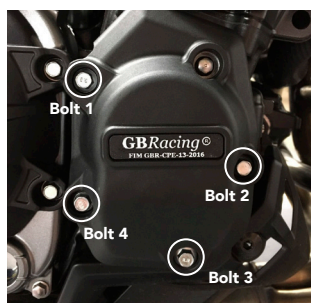
Bolt 2
M6X40HHF
- 11Nm

Bolt 4
M6X35HHF
- 11Nm

Bolt 3
M6X40HHF
- 11Nm

SECONDARY PULSE COVER PART NO. EC-Z900-2017-3-GBR

1. Remove 4 existing bolts from the Pulse cover, shown as position Bolt 1, 2, 3 & 4.
2. Place the Secondary Pulse Cover over the stock cover. Assemble 4 replacement bolts loosely in the correct position as shown.
3. Tighten bolts to a Torque of 11Nm as per Manufacturer's recommendations.
DO NOT OVERTIGHTEN.



Bolt 1
M6X35HHF -
11Nm



Bolt 2
M6X35HHF -
11Nm

Bolt 4
M6X35HHF -
11Nm

Bolt 3
M6X35HHF - 11Nm

Engine Cover Set: EC-Z900-2017-SET-GBR

EC-Z900-2017-1-GBR, EC-Z900-2017-2-GBR, EC-Z900-2017-3-GBR

PADDOCK STAND / BOBBIN SET
PART NO. BA12-8-GBR-SET

- 1 Assemble M8 x 40mm Bolt through the moulded bobbin.
- 2 Tighten bolts to swing arm boss, 8 Nm.
DO NOT OVERTIGHTEN

1 x M8 x 40 Bolt



1 x Moulded Paddock Stand / Bobbin



BULLET FRAME SLIDER - LEFT HAND SIDE - STREET
PART NO. FS-Z900-2017-LHS-S

- 1 Remove upper engine mounting bolt - see location at **Fig. 1**
- 2 Assemble bolt through the aluminium bush adding CPBE-10-35 and place into correct position.
- 3 Tighten to 48Nm torque.
- 4 Slide bullet moulding onto aluminium bush.
- 5 Screw M6 bolt into front of bullet moulding hand tight.

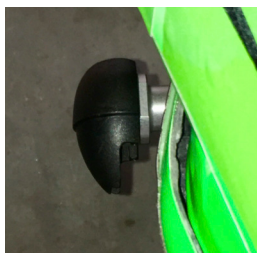
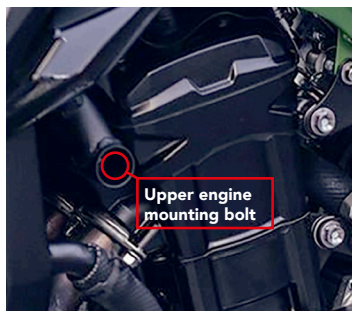


Fig. 1



CPM-3

CPB-10-45

CPBE-10-35

M10x1.25x80

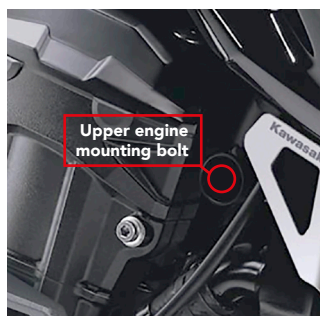


BULLET FRAME SLIDER - RIGHT HAND SIDE - STREET
PART NO. FS-Z900-2017-RHS-S

- 1 Remove upper engine mounting bolt - see location at **Fig. 1**
- 2 Assemble bolt through the aluminium bush adding CPBE-10-35 and place into correct position.
- 3 Tighten to 48Nm torque.
- 4 Slide bullet moulding onto aluminium bush.
- 5 Screw M6 bolt into front of bullet moulding hand tight.



Fig. 1



CPM-3

CPB-10-40

CPBE-10-35

M10x1.25x80



Bullet Frame Slider SET - STREET - Part No.: FS-Z900-2017-S

Engine Cover Set: EC-Z900-2017-SET-GBR

EC-Z900-2017-1-GBR, EC-Z900-2017-2-GBR, EC-Z900-2017-3-GBR

www.GBRacing.eu

DO NOT use these products unless you agree to our Terms & Conditions, as shown on our paperwork and website. If you do not agree, please return the product(s) to your dealer for a refund.