

FITTING INSTRUCTIONS

TO BE FITTED BY A QUALIFIED TECHNICIAN

Threaded Brake Lever Guard **Part No. BLG-M5-S20-B5-A160-GBR**

Threaded Clutch Lever Guard **Part No. CLG-M5-S20-B5-A160-GBR**

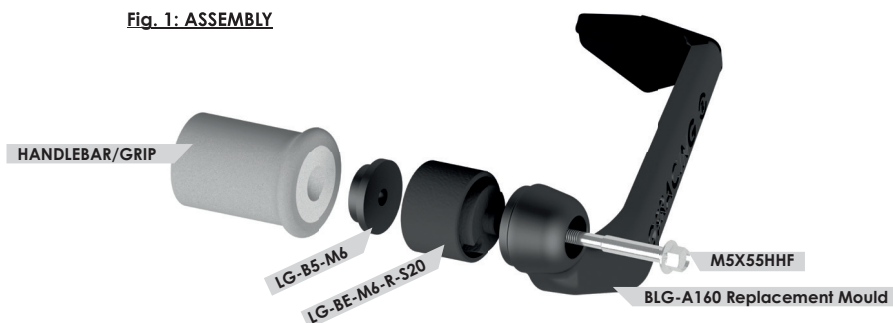
M5 THREADED BRAKE LEVER GUARD, 20mm SPACER BAR END WITH 5MM BUSH, 160mm PART NO. BLG-M5-S20-B5-A160-GBR

- 1 Remove existing bar end and replace with supplied assembly as in Fig 1 below
- 2 Tighten bolt until the lever protector is tight and does not move up or down under normal pressure. Torque the M5 bolt to 12Nm.
- 3 Do not ride if you are unsure if it is tight enough and always get a trained technician to confirm.

Please note: We recommend to use a medium thread lock (not supplied) for correct operation.



Fig. 1: ASSEMBLY

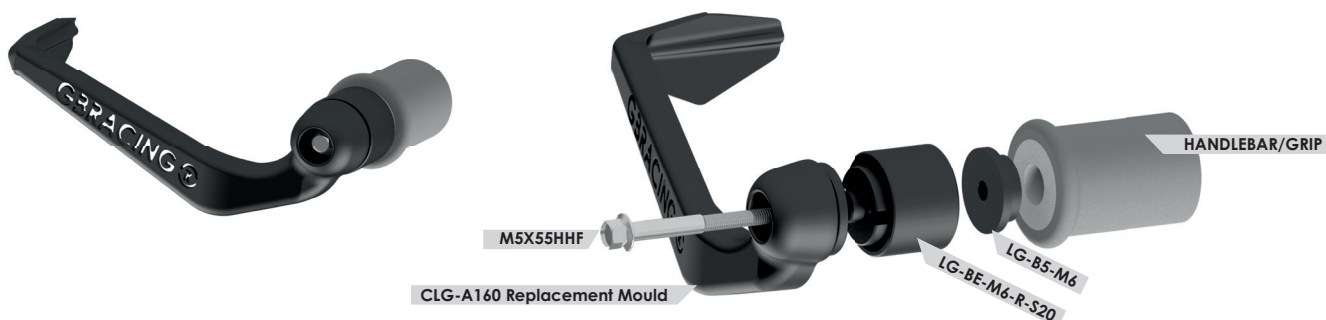


M5 THREADED CLUTCH LEVER GUARD, 20mm SPACER BAR END WITH 5MM BUSH, 160mm PART NO. CLG-M5-S20-B5-A160-GBR

- 1 Remove existing bar end and replace with supplied assembly as in Fig 1 below
- 2 Tighten bolt until the lever protector is tight and does not move up or down under normal pressure. Torque the M5 bolt to 12Nm.
- 3 Do not ride if you are unsure if it is tight enough and always get a trained technician to confirm.

Please note: We recommend to use a medium thread lock (not supplied) for correct operation.

Fig. 1: ASSEMBLY



FITTING INSTRUCTIONS

TO BE FITTED BY A QUALIFIED TECHNICIAN

UNIVERSAL BRAKE LEVER GUARD, A160 MOULDED REPLACEMENT PART ONLY PART NO. BLG-A160

This is to be used with the GBRacing bar end and insert

- 1 Remove existing bar end and replace with supplied bar end.
- 2 Tighten bolt until the lever protector is tight and does not move up or down under normal pressure.
- 3 Do not ride if you are unsure if it is tight enough and always get a trained technician to confirm.



UNIVERSAL CLUTCH LEVER GUARD, A160 MOULDED REPLACEMENT PART ONLY PART NO. CLG-A160

This is to be used with the GBRacing bar end and insert

- 1 Remove existing bar end and replacing it with supplied bar end.
- 2 Tighten bolt until the lever protector is tight and does not move up or down under normal pressure.
- 3 Do not ride if you are unsure if it is tight enough and always get a trained technician to confirm.

